

MANUFACTURERS OF:  
 SNAKE GLUE TRAP  
 BAT REPELLENT  
 MOLE CONTROL  
 SPIDER WEB CONTROL  
 RABBIT & SQUIRREL  
 RAT & MICE REPELLENT  
 DOG & CAT REPELLENT  
 DEER & RABBIT  
 MOSQUITO GRANULES  
 INDOOR VARMINT ROPE  
 FLEA & TICK REPELLENT  
 RX INSECT REPELLENT  
 GUARANTEED PERFORMANCE

REPELL.COM

UNIVERSITY TESTED



LASTS 2 TO 3 MONTHS

**SNAKE-A-WAY**  
 Snake Repelling Granules

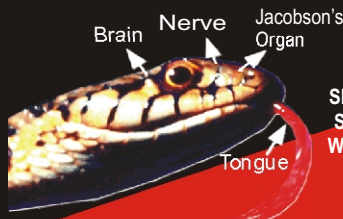
REPELS POISONOUS &  
 NONPOISONOUS SNAKES

**Guaranteed!**

CAUTION: Keep Out of Reach of Children  
 (See back panel for additional precautionary statements.)



Active Ingredients:  
 Naphthalene.....7.0%  
 Sulfur: .....28.0%  
 Inert Ingredients.....65.0%  
 Total:.....100.0%  
 Net Weight ....4lbs. (1.814 kg)



**HOW SNAKE-A-WAY WORKS**  
 THE STUDY OF THE UNIVERSITY THAT TESTED SNAKE-A-WAY STATES THAT SNAKE-A-WAY IS DETECTED BY A SNAKE'S SENSORY ORGAN (JACOBSON'S ORGAN). WHEN THE PRODUCT IS DETECTED BY THE JACOBSON'S ORGAN IT APPARENTLY INSTRUCTS THE SNAKE TO AVOID THE PRODUCT.

GREAT TO APPLY SNAKE-A-WAY AROUND HOUSES, CABINS, TRAILERS, GARAGES, BARNs, WOODPILES, TRASH CANS, FLOWER BEDS OR ANYWHERE SNAKES ARE UNDESIREd.

**WHEN TO APPLY SNAKE-A-WAY:**  
 SPRING: WHEN SNAKES ARE MOST ACTIVE  
 SUMMER: WHEN FAMILIES ARE MOST EXPOSED TO THE OUTDOORS  
 FALL: APPLICATION CRITICAL TO PREVENT SPRING INFESTATIONS ARRIVING FROM HIBERNATION AND DENNING.

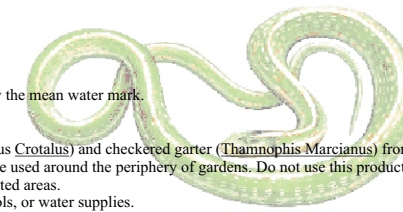


**PRECAUTIONARY STATEMENTS**  
**HAZARDS TO HUMANS AND DOMESTIC ANIMALS**  
 CAUTION  
 Harmful if swallowed, avoid breathing vapors. Avoid contamination of food and feed. Avoid prolonged skin contact.

**ENVIRONMENTAL HAZARDS**  
 CAUTION  
 This pesticide is toxic to fish. Do not apply directly to water, or to areas where surface water is present or to intertidal areas below the mean water mark.

**DIRECTIONS FOR USE**  
 It is a violation of federal law to use this product in a manner inconsistent with its labeling.  
**USE RESTRICTIONS:** FOR OUTDOOR USE ONLY. APPLY ONLY AS DIRECTED ON LABEL. To repel rattlesnakes (Genus *Crotalus*) and checkered garter (*Thamnophis Marcianus*) from areas around houses, cabins, trailers, garages, utility houses, barns, woodpiles, sand piles, trash cans, and flower beds. May also be used around the periphery of gardens. Do not use this product at sites where snakes are believed to be already present as the deterrent effects of the product might tend to confine snakes to the treated areas. Do not apply this product in gardens or in fields of crops grown for food or feed. Do not use this product near streams, ponds, pools, or water supplies. Tests of this product have suggested that it can be an effective deterrent for the types of snakes listed above. While the product might deter other types of snakes as well, it is not expected to consistently repel snakes of the following types: corn snakes and other rat snakes (Genus *Elaphe*); and "moccasin" snakes such as cottonmouths and copperheads (Genus *Agkistrodon*).  
**APPLICATION DIRECTIONS:** Using gloves, apply SNAKE-A-WAY IN BANDS SURROUNDING THE AREA TO BE PROTECTED. Use bands 4 to 5 inches wide to repel checkered garter snakes. For rattlesnakes, use bands 8 to 12 inches wide. In yards, lightly sprinkle SNAKE-A-WAY over the area within the treatment band. When the odor of SNAKE-A-WAY becomes faint, its effectiveness may be diminished. If this occurs during a season when snakes are active, retreat with enough of the product to restore the original odor intensity. Retreatment may also be necessary after heavy rains.  
 Notice: Buyer assumes all risk of use, storage, and handling of this material not in strict accordance with label directions.

**Storage and Disposal**  
**STORAGE:** Store only in original container, in a cool, dry place, inaccessible to children and pets.  
**DISPOSAL:**  
 If empty: Do not reuse this container. Place in trash or offer for recycling if available.  
 If partly filled: Call your local solid waste agency or 1-800-CLEANUP (1-800-253-2687) for disposal instructions. Never place unused product down any indoor or outdoor drain.  
**First Aid: If inhaled:** •Move person to fresh air. •If person is not breathing, call 911 or an ambulance, then give artificial respiration, preferably by mouth-to-mouth, if possible. •Call a poison control center or doctor for further treatment advice.  
**If on skin or clothing:** •Take off contaminated clothing. •Rinse skin immediately with plenty of water for 15-20 minutes. •Call a poison control center or doctor for treatment advice.  
**If in eyes:** •Hold eye open and rinse slowly and gently with water for 15-20 minutes. •Remove contact lenses, if present, after the first 5 minutes, then continue rinsing eye. •Call a poison control center or doctor for treatment advice.  
**If swallowed:** •Call poison control center or doctor immediately for treatment advice. •Have person sip a glass of water if able to swallow. •Do not induce vomiting unless told to do so by the poison control center or doctor. Do not give anything by mouth to an unconscious person. Have the product container with you when calling a poison control center or doctor, or going for treatment.  
**Note to physician:** If breathing is difficult, give oxygen.



DR. T'S NATURE PRODUCTS INC.  
 P.O. Box 682  
 PELHAM, GA 31779  
 800-299-6288

Patented  
 EPA Reg. Number 58630-1  
 EPA Est. No. 58630-GA-1